

**F** notice d'instruction

## **CIRCUIT IMPRIME**

**GB** user instructions

## **PRINTED CIRCUIT BOARD**

**I** istruzioni d'impiego

## **CIRCUITO STAMPATO**

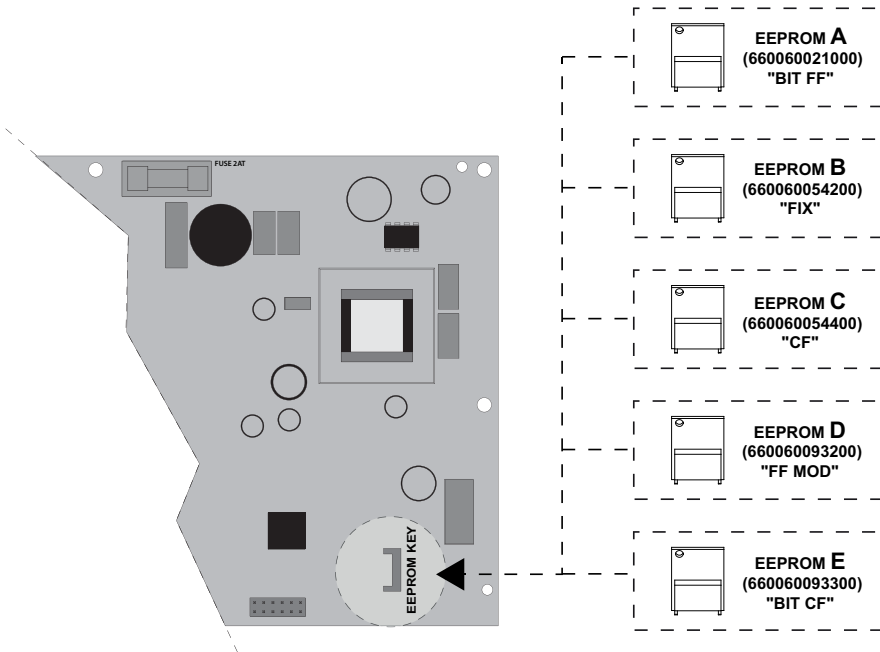
**ES** manual de instrucciones

## **CIRCUITO ELECTRÓNICO**

# 1 - REPLACING EEPROM

To install the module :

**A** (660060021000) or **B** (660060054200) or **C** (660060054400) or **D** (660060093200) or **E** (660060093300), according to table *pages 18 > 25* - Column "EEProm"



# 2 - SETTING THE LANGUAGE

1. Press the ON/OFF key to turn on the boiler.
2. Press Menu/OK.  
A blinking '0' is displayed.  
(The following text is displayed on the line below "Time-Date-Language").
3. Press Menu/OK.  
The numbers '00' will appear, with the second number blinking (language).
4. Press Menu/OK.  
Turn the button of adjustment of 'temperature heating' to set language.
5. After selecting the language, press Menu/OK to confirm.
6. Press 'ESC' to return to the main screen.

## 3 - PARAMETERS TO BE CHECKED

---

*Configure the parameters below according to the indications of the table pages 18 > 25*

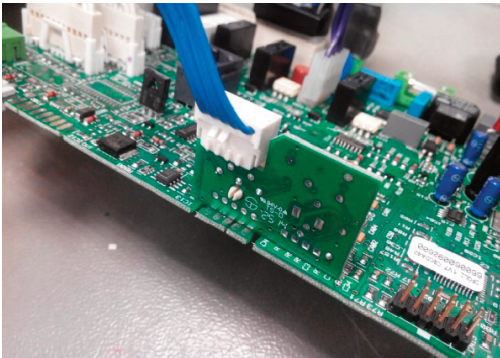
- Parameter 21 : **Acces code : 234**
- Parameter 220\* : Soft ignition
- Parameter 228 : Boiler version
- Parameter 230 : Max. CH Absolute
- Parameter 231\* : Max. CH Adjustable
- Parameter 238 : Pump Speed Control
- Parameter 247 : CH Press Detection Device
- Parameter 248 : Semi-auto filling
- Parameter 250 : Comfort
- Parameter 253 : DHW Switch Off Logic
- Parameter 302 : T° storage reduced
- Parameter 870 : Basic or Expert (CHX Fr Only)

*Adjust the parameters according to the configuration of the installation  
(see the installation instructions).*

*\* On devices with display with LED, which are not visible these parameters, it is necessary to perform the gas settings as specified in the manual of the boiler.*

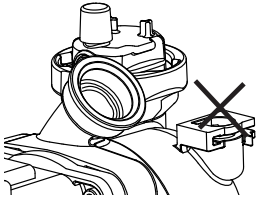
## 4 - WIRING Display

---



Wiring display has to be connected on Gateway

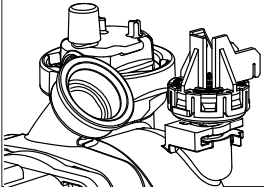
## 5 - NOTE for the parameter 247



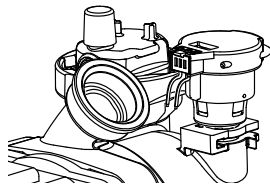
- ▶ Parameter 247 = 0
- ▶ Case of devices with display LED ▶



- *Boiler CF* : it is necessary to change the wiring of the gas valve which is in this kit (wiring 560000166000).
- *Boiler FF* : it is necessary to change the wiring of the gas valve which is in this kit (wiring 560000166100).



- ▶ Parameter 247 = 1



- ▶ Parameter 247 = 2

## 6 - NOTE for ECOSI

***Only for :***

3314011 - 3314012 - 3314013 - 3314014 - 3314019 - 3314020 - 3314024 - 3314025 - 3314026

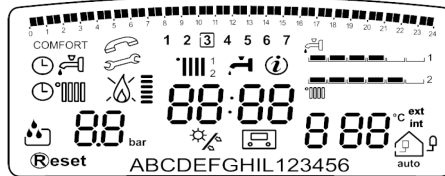
If "flame" LED doesn't light on, set parameter **245 = 1**

## 7 - NOTE for the display

### Only for :

3300106 - 3300107 - 3300109 - 3300110 - 3300112 - 3300113 - 3300115 - 3300116 - 3300117 - 3300118  
 3300119 - 3300120 - 3300121 - 3300122 - 3300123 - 3300127 - 3300128 - 3300129 - 3300130 - 3300131  
 3300233 - 3300234 - 3300235 - 3300236 - 3300237 - 3300238 - 3300239 - 3300240 - 3300241 - 3300242  
 3300258 - 3300297 - 3300298 - 3300299 - 3300300 - 3300301 - 3300302 - 3300303 - 3300304 - 3300305  
 3300306 - 3300334 - 3665080 - 3665081 - 3665082

If the display is like the picture below,  
 then it is necessary to change it (Code 65105149-02)



## 8 - NOTE for Alixia, AS, BS, Egis, FA

### Only for :

**ALIXIA :** 3310059 - 3310060 - 3310061 - 3310062 - 3310169 - 3310170 - 3310258 - 3310304  
 3310305 - 3650227 - 3650228 - 3650229 - 3650230 - 3650286 - 3650300 - 3650301  
 3650337 - 3650338 - 3650346

**AS :** 3300183 - 3300184 - 3300185 - 3300186 - 3300335 - 3300336 - 3300337 - 3300338  
 3300348

**BS :** 3300285 - 3300286 - 3300294

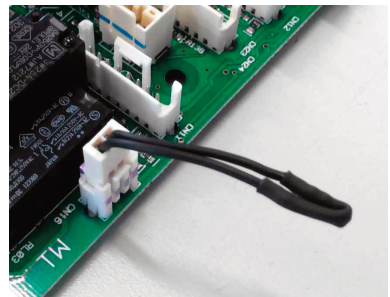
**EGIS :** 3300179 - 3300180 - 3300181 - 3300182 - 3300193 - 3300194 - 3300195 - 3300196  
 3300252 - 3300253 - 3300254 - 3300255 - 3300259 - 3300260 - 3300320 - 3300321  
 3300322 - 3300323

**FA :** 3314027 - 3314028

### **PARAMETERS (fixed values, selectable before with the DIP-switches) :**

- 1 - CH restart delay : 2'
- 2 - DHW Postventilation : SMART
- 3 - SOLAR Fonction:

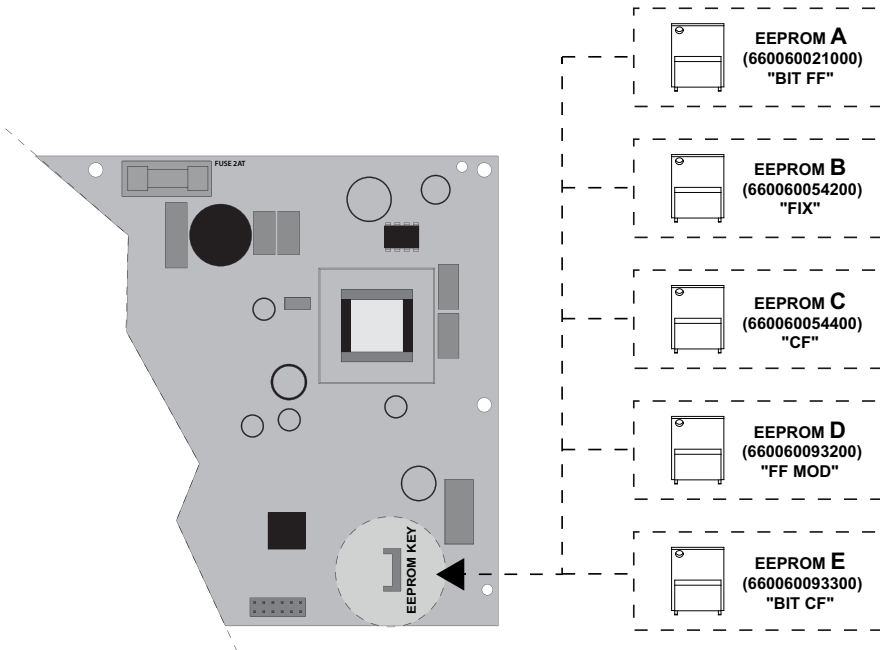
To activate the SOLAR function on these boilers,  
 must be connected to the circuit (CN16 connector)  
 wiring provided as shown in the picture.



# 1 - INSTALLATION EEPROM

Installer le module :

**A** (660060021000) OU **B** (660060054200) OU **C** (660060054400) OU **D** (660060093200) OU **E** (660060093300), suivant le tableau *pages 18 > 25* - Colonne 'EEprom'



# 2 - PARAMETRAGE DE LA LANGUE

1. Allumer la chaudière avec la touche ON/OFF.
2. Pousser la touche MENU/OK : apparaîtra le numéro '0' clignotant (en bas apparaît le texte : "Heure-Date-Langue").
3. Pousser à nouveau MENU/OK.  
Apparaîtra le numéro '00' avec le deuxième chiffre clignotant (langue).
4. Pousser à nouveau MENU/OK.  
Faire tourner le bouton de réglage de 'température chauffage' jusqu'à visualiser la langue désirée.
5. Une fois sélectionnée la langue désirée, pousser MENU/OK pour confirmer.

## 3 - PARAMETRES A VERIFIER

---

*Configurer les paramètres ci-dessous suivant les indications du tableau pages 18 > 25*

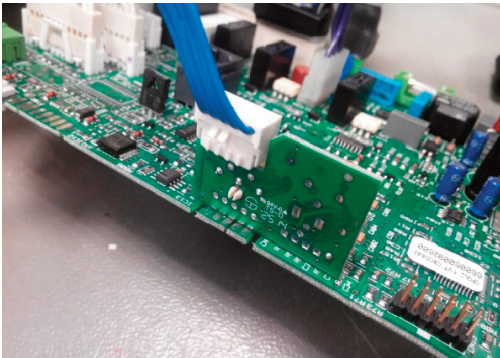
- Paramètre 21 : **Code accès : 234**
- Paramètre 220\* : Allumage Lent
- Paramètre 228 : Version chaudière
- Paramètre 230 : Puissance chauffage maximum
- Paramètre 231\* : Puissance chauffage réglable
- Paramètre 238 : Vitesse pompe
- Paramètre 247 : Indication dispositif pour pression circuit chauffage
- Paramètre 248 : Habilitation remplissage automatique
- Paramètre 250 : Comfort
- Paramètre 253 : Extinction du brûleur en sanitaire
- Paramètre 302 : T° ballon réduite
- Paramètre 870 : Basic ou Expert (CHX Fr Seulement)

*Effectuer le réglage des paramètres en fonction de la configuration de l'installation (voir la notice d'installation).*

\* sur les appareils avec afficheur à led, où ne sont pas visibles ces paramètres, il est nécessaire d'effectuer les réglages gaz comme indiqués dans le manuel de la chaudière.

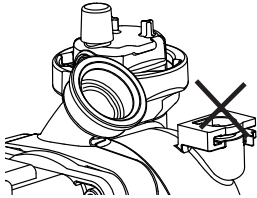
## 4 - CABLAGE Circuit Affichage

---

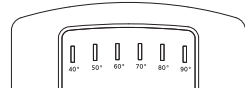
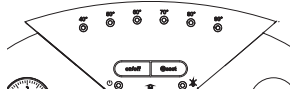


Le câblage du circuit d'affichage est à connecter sur le Gateway.

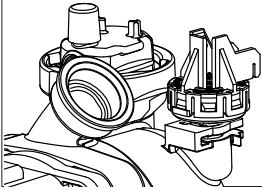
## 5 - NOTA pour le paramètre 247



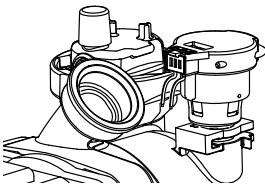
- ▶ Paramètre 247 = 0
- ▶ Cas des appareils avec afficheur LED



- *Appareils CF* : Monter le câblage (fourni) 560000166000 à la place de celui présent dans la chaudière.
- *Appareils FF* : Monter le câblage (fourni) 560000166100 à la place de celui présent dans la chaudière.



- ▶ Paramètre 247 = 1



- ▶ Paramètre 247 = 2

## 6 - NOTA pour ECOSI

***Seulement pour les appareils :***

3314011 - 3314012 - 3314013 - 3314014 - 3314019 - 3314020 - 3314024 - 3314025 - 3314026

S'il manque la LED "flamme", mettre le paramètre **245 = 1**



## 7 - NOTA pour l'afficheur

### Seulement pour les appareils :

3300106 - 3300107 - 3300109 - 3300110 - 3300112 - 3300113 - 3300115 - 3300116 - 3300117 - 3300118  
 3300119 - 3300120 - 3300121 - 3300122 - 3300123 - 3300127 - 3300128 - 3300129 - 3300130 - 3300131  
 3300233 - 3300234 - 3300235 - 3300236 - 3300237 - 3300238 - 3300239 - 3300240 - 3300241 - 3300242  
 3300258 - 3300297 - 3300298 - 3300299 - 3300300 - 3300301 - 3300302 - 3300303 - 3300304 - 3300305  
 3300306 - 3300334 - 3665080 - 3665081 - 3665082

Si l'afficheur est comme celui du dessin ci-dessous, alors  
 il est nécessaire de le changer (Code 65105149-02)



## 8 - NOTA pour Alixia, AS, BS, Egis, FA

### Seulement pour les appareils :

**ALIXIA :** 3310059 - 3310060 - 3310061 - 3310062 - 3310169 - 3310170 - 3310258 - 3310304  
 3310305 - 3650227 - 3650228 - 3650229 - 3650230 - 3650286 - 3650300 - 3650301  
 3650337 - 3650338 - 3650346

**AS :** 3300183 - 3300184 - 3300185 - 3300186 - 3300335 - 3300336 - 3300337 - 3300338  
 3300348

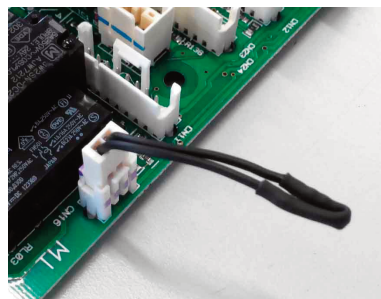
**BS :** 3300285 - 3300286 - 3300294

**EGIS :** 3300179 - 3300180 - 3300181 - 3300182 - 3300193 - 3300194 - 3300195 - 3300196  
 3300252 - 3300253 - 3300254 - 3300255 - 3300259 - 3300260 - 3300320 - 3300321  
 3300322 - 3300323

**FA :** 3314027 - 3314028

### **PARAMETRES** (valeurs fixes, sélectionnables auparavant avec les DIP-SWITCHES) :

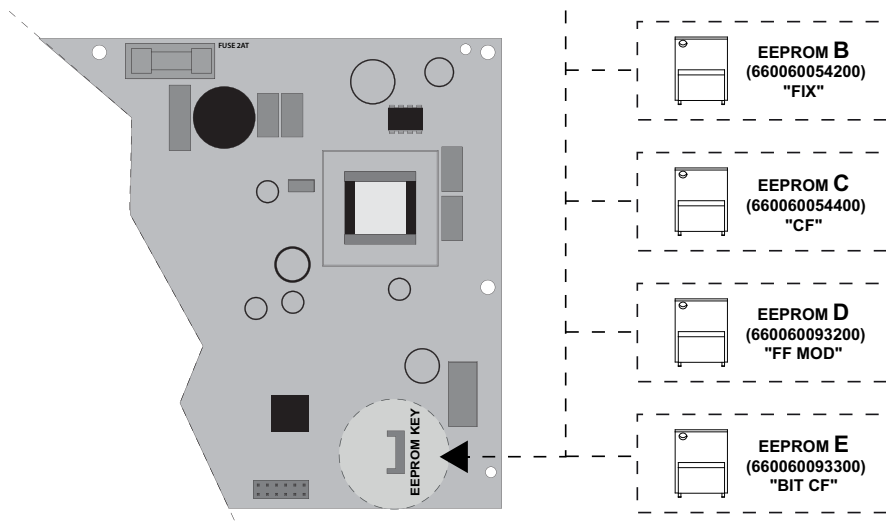
- 1 - Délai d'attente allumage : 2'
- 2 - Post-ventilation après puisage eau chaude sanitaire : SMART
- 3 - Fonction SOLAR :  
 Pour activer la fonction solaire sur ces chaudières, il faut connecter au circuit (connecteur CN16) le câblage fourni comme indiqué sur la photo.



# 1 - INSTALLAZIONE EEPROM

Installare il modulo

**A** (660060021000) **O B** (660060054200) **O C** (660060054400) **O D** (660060093200) **O E** (660060093300),  
secondo la tavola *pagine 18 > 25* - colonna "EEProm"



# 2 - PARAMETRIZZAZIONE LINGUA

1. Accendere la caldaia con il tasto ON/OFF.
2. Premere il pulsante MENÙ/OK: comparirà il numero '0' lampeggiante (In basso compare il testo: 'Ora-Data-Lingua').
3. Premere di nuovo MENÙ/OK.  
Comparirà il numero '00' con la seconda cifra lampeggiante (lingua).
4. Premere di nuovo MENÙ/OK.  
Ruotare la manopola regolazione 'temperatura riscaldamento' fino a visualizzare la lingua desiderata.
5. Una volta selezionata la lingua desiderata, premere MENÙ/OK per confermare.
6. Premere ripetutamente 'ESC' fino a tornare alla videata principale.

## 3 - PARAMETRI DA VERIFICARE

---

*Configurare i parametri qui di seguito secondo le indicazioni della tabella a pagine 18 > 25*

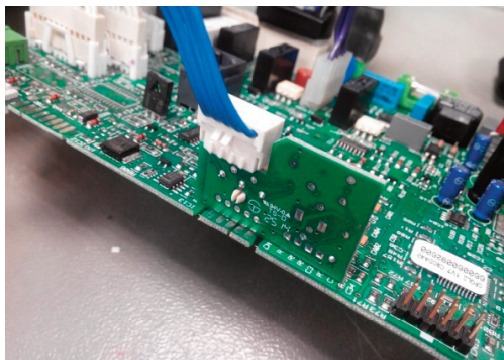
- Parametro 21 : **Codice d'accesso : 234**
- Parametro 220\* : Lenta accensione
- Parametro 228 : Versione Caldaia
- Parametro 230 : Massima potenza Riscaldamento
- Parametro 231\* : Massima potenza Riscaldamento regolabile
- Parametro 238 : Velocità pompa
- Parametro 247 : Indicazione dispositivo per rilevazione pressione circuito risc.
- Parametro 248 : Abilitaz. Riempim Semiautomatico
- Parametro 250 : Comfort
- Parametro 253 : Logica spegimento bruciatore in sanitario
- Parametro 302 : T° storage ridotto
- Parametro 870 : Basic o Expert (CHX Fr soltanto)

*Effettuare la regolazione dei parametri in funzione della configurazione dell'installazione (vedi la nota d'installazione)*

\* sulle caldaie con display a led, dove non sono visibili questi parametri, è necessario effettuare le regolazioni gas come da indicazioni presenti nel manuale caldaia.

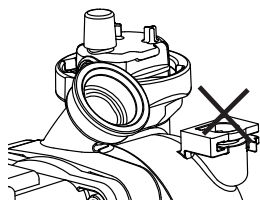
## 4 - CABLAGGIO Display

---

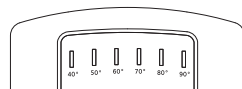
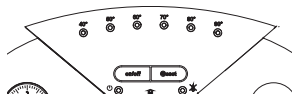


Il cablaggio display è da collegare sul Gateway

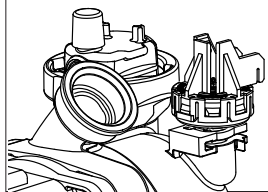
## 5 - NOTA per il parametro 247



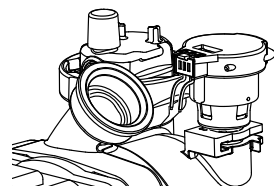
- ▶ Parametro 247 = 0
- ▶ Caso degli apparecchi con il Display LED ▶



- *Apparecchi CF*: Sostituire il cablaggio del modulatore della valvola gas con il cablaggio 560000166000 (fornito).
- *Apparecchi FF*: Sostituire il cablaggio del modulatore della valvola gas con il cablaggio 560000166100 (fornito).



- ▶ Parametro 247 = 1



- ▶ Parametro 247 = 2

## 6 - NOTA per ECOSI

Solo per gli apparecchi :

3314011 - 3314012 - 3314013 - 3314014 - 3314019 - 3314020 - 3314024 - 3314025 - 3314026

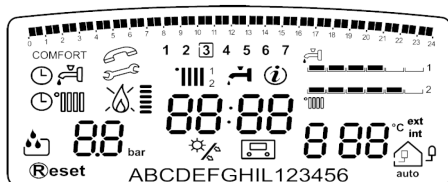
Se manca l'accensione del led "fiamma", mettere il parametro **245 = 1**

## 7 - NOTA per il display

### Solo per gli apparecchi :

3300106 - 3300107 - 3300109 - 3300110 - 3300112 - 3300113 - 3300115 - 3300116 - 3300117 - 3300118  
 3300119 - 3300120 - 3300121 - 3300122 - 3300123 - 3300127 - 3300128 - 3300129 - 3300130 - 3300131  
 3300233 - 3300234 - 3300235 - 3300236 - 3300237 - 3300238 - 3300239 - 3300240 - 3300241 - 3300242  
 3300258 - 3300297 - 3300298 - 3300299 - 3300300 - 3300301 - 3300302 - 3300303 - 3300304 - 3300305  
 3300306 - 3300334 - 3665080 - 3665081 - 3665082

Se il display è quello in figura sotto, sostituire anche il display (codice 65105149-02)



## 8 - NOTA per Alixia, AS, BS, Egis, FA

### Solo per gli apparecchi :

**ALIXIA :** 3310059 - 3310060 - 3310061 - 3310062 - 3310169 - 3310170 - 3310258 - 3310304  
 3310305 - 3650227 - 3650228 - 3650229 - 3650230 - 3650286 - 3650300 - 3650301  
 3650337 - 3650338 - 3650346

**AS :** 3300183 - 3300184 - 3300185 - 3300186 - 3300335 - 3300336 - 3300337 - 3300338  
 3300348

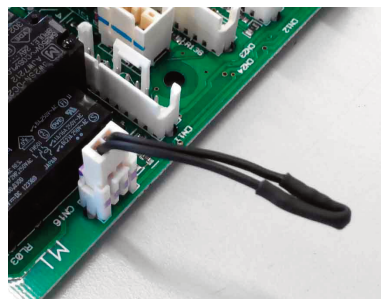
**BS :** 3300285 - 3300286 - 3300294

**EGIS :** 3300179 - 3300180 - 3300181 - 3300182 - 3300193 - 3300194 - 3300195 - 3300196  
 3300252 - 3300253 - 3300254 - 3300255 - 3300259 - 3300260 - 3300320 - 3300321  
 3300322 - 3300323

**FA :** 3314027 - 3314028

### **PARAMETRI (valori fissi, prima selezionabili con DIP-SWITCHES) :**

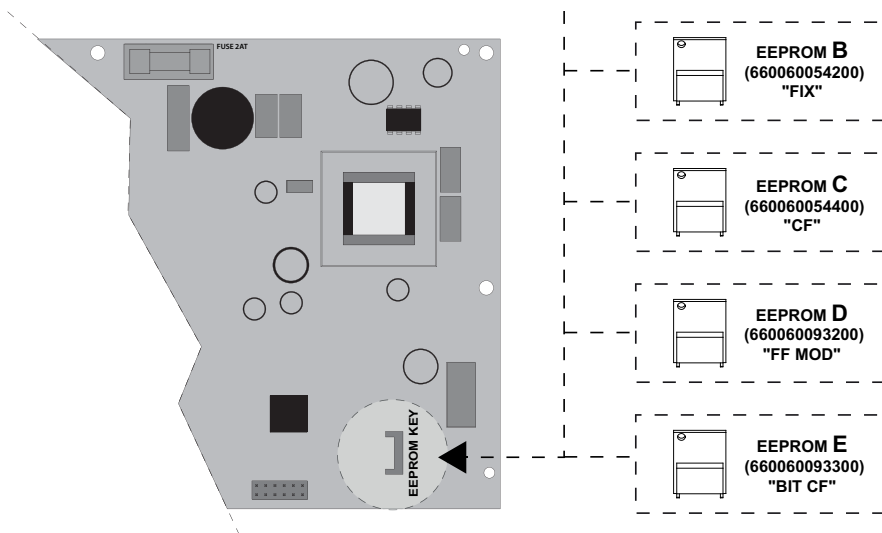
- 1 - Ritardo di accensione : 2'
- 2 - Post-ventilazione dopo prelievo sanitario :  
SMART
- 3 - SOLAR Function :  
Per attivare la funzione solare su queste caldaie,  
occorre collegare alla scheda (connettore CN16)  
il cablaggio fornito come indicato in foto.



# 1 - INSTALACIÓN EEPROM

Instalar módulo.

**A** (660060021000) **O B** (660060054200) **O C** (660060054400) **O D** (660060093200) **O E** (660060093300), según la tabla situada en las páginas 18 > 25 columna "EEProm"



## 2 - PROGRAMAR EL IDIOMA

1. Encender la caldera con la tecla ON/OFF.
2. Pulsar la tecla MENU/OK :  
aparecerá el número '0' intermitente (en la parte inferior aparecerá la frase :  
'Hora-Fecha-Idioma')
3. Pulsar otra vez e MENU/OK :  
aparecerá el numero '00' con la segunda cifra intermitente (lengua)
4. Pulsa de nuevo MENU/OK :  
Girar el mando de regulación de temperatura de calefacción hasta visualizar el idioma deseado.
5. Una vez seleccionado el idioma deseado, pulsar MEN/OK para confirmar.
6. Pulsar repetidamente 'ESC? Hasta volver a la pantalla inicial.

## 3 - PARAMETROS A VERIFICAR

---

*Configurar los siguientes parámetros según las indicaciones de la tabla de las páginas 18 > 25*

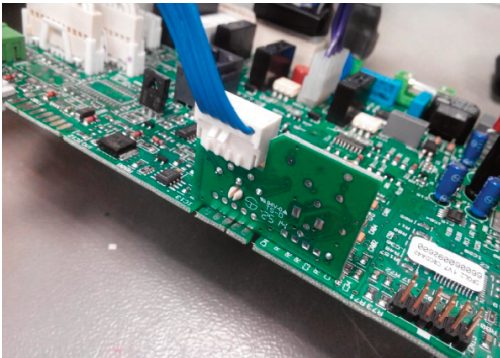
- Parámetro 21 : **Código de acceso : 234**
- Parámetro 220\* : Encendido lento
- Parámetro 228 : Versión caldera
- Parámetro 230 : Potencia absoluta calefacción
- Parámetro 231\* : Ajuste potencia máxima calefacción
- Parámetro 238 : Velocidad bomba
- Parámetro 247 : Indicación dispositivo de detección de presión calefacción
- Parámetro 248 : Llenado semiautomático activo
- Parámetro 250 : Comfort
- Parámetro 253 : Lógica de apagado del quemador en sanitario
- Parámetro 302 : T° acumulación reducida
- Parámetro 870 : Basic o Expert (sólo mercado CHAFFOTEAUX Francia)

*Realizar el ajuste de los parámetros en función de la configuración de la instalación (ver manual de instalación).*

*\*En calderas con display LED, donde no son visibles dichos parámetros, es necesario realizar los ajustes de gas según se especifica en el manual de la caldera.*

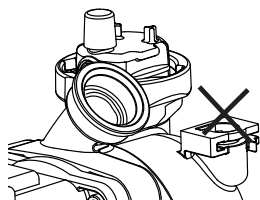
## 4 - CABLEADO pantalla

---

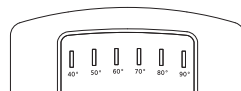
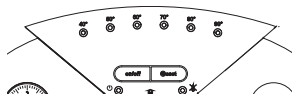


El cableado de la pantalla se debe de conectar en el Gateway.

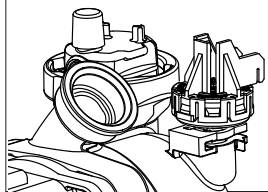
## 5 - NOTA para ajustes del parámetro 247



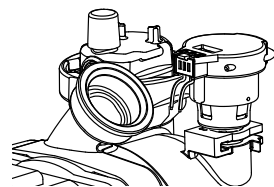
- ▶ Parametro 247 = 0
- ▶ Caso de los dispositivos con display LED ▶



- Calderas CF : es necesario substituir el cable de la válvula de gas que se suministra (cable 560000166000).
- Calderas FF : es necesario substituir el cable de la válvula de gas que se suministra (cable 560000166100).



- ▶ Parametro 247 = 1



- ▶ Parametro 247 = 2

## 6 - NOTA para modelos ECOSI

**Solamente para :**

3314011 - 3314012 - 3314013 - 3314014 - 3314019 - 3314020 - 3314024 - 3314025 - 3314026

Si el LED “llama” no se enciende, programar el parámetro **245=1**

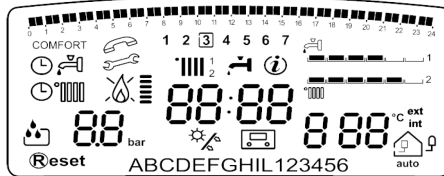


# 7 - NOTA para calderas con DISPLAY

## Solamente para :

3300106 - 3300107 - 3300109 - 3300110 - 3300112 - 3300113 - 3300115 - 3300116 - 3300117 - 3300118  
 3300119 - 3300120 - 3300121 - 3300122 - 3300123 - 3300127 - 3300128 - 3300129 - 3300130 - 3300131  
 3300233 - 3300234 - 3300235 - 3300236 - 3300237 - 3300238 - 3300239 - 3300240 - 3300241 - 3300242  
 3300258 - 3300297 - 3300298 - 3300299 - 3300300 - 3300301 - 3300302 - 3300303 - 3300304 - 3300305  
 3300306 - 3300334 - 3665080 - 3665081 - 3665082

Si el display es como el de la imagen inferior, sustituir también el circuito display  
 (código del recambio 65105149-02)



# 8 - NOTA para Alixia, AS, BS, Egis, FA

## Solamente para :

**ALIXIA :** 3310059 - 3310060 - 3310061 - 3310062 - 3310169 - 3310170 - 3310258 - 3310304  
 3310305 - 3650227 - 3650228 - 3650229 - 3650230 - 3650286 - 3650300 - 3650301  
 3650337 - 3650338 - 3650346

**AS :** 3300183 - 3300184 - 3300185 - 3300186 - 3300335 - 3300336 - 3300337 - 3300338  
 3300348

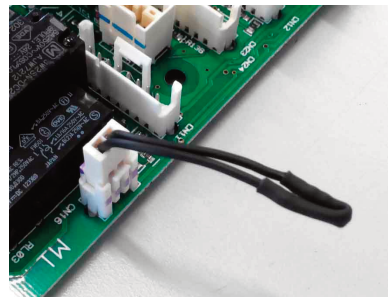
**BS :** 3300285 - 3300286 - 3300294

**EGIS :** 3300179 - 3300180 - 3300181 - 3300182 - 3300193 - 3300194 - 3300195 - 3300196  
 3300252 - 3300253 - 3300254 - 3300255 - 3300259 - 3300260 - 3300320 - 3300321  
 3300322 - 3300323

**FA :** 3314027 - 3314028

## **PARÁMETROS** (valores fijos, seleccionables primero a través de los DIP-switches) :

- 1 - Retardo de encendido : 2'
- 2 - Post-ventilación después de una extracción de sanitario : SMART
- 3 - Activación modalidad solar :  
 Para activar la función SOLAR en éstas calderas, debe conectarse en el circuito electrónico (en el conector CN16) el cableado proporcionado tal cual se especifica en la imagen.



		Parameters / Paramètres / Parametri / Ajustes										EEprom		
		220	228	230	231	238	247	248	250	253	302		870	
3300106	GENUS 24 FF NG (IT) --> Nota 7	36	0	69	52	2	--> Nota 5	1	0				D - 660060093200	
3300107	GENUS 24 FF NG (EAA 01) --> Nota 7	36	0	69	52	2		1	0					D - 660060093200
3300108	CLAS 24 FF NG (PI)	47	0	69	52	2		0	0					B - 660060054200
3300109	GENUS 24 CF NG (IT) --> Nota 7	0	0	63	47	2		1	0					C - 660060054400
3300110	GENUS 24 CF NG (EAA 01) --> Nota 7	0	0	63	47	2		1	0					C - 660060054400
3300111	CLAS 24 CF NG	0	0	63	47	2		0	0					C - 660060054400
3300112	GENUS 28 FF NG (IT) --> Nota 7	36	0	64	49	2		1	0					D - 660060093200
3300113	GENUS 28 FF NG (EAA 01) --> Nota 7	36	0	64	49	2		1	0					D - 660060093200
3300114	CLAS 28 FF NG (PI)	47	0	64	49	2		0	0					B - 660060054200
3300115	GENUS 28 CF NG (IT) --> Nota 7	0	0	61	45	2		1	0					C - 660060054400
3300116	GENUS 28 CF NG (EAA 01) --> Nota 7	0	0	61	45	2		1	0					C - 660060054400
3300117	GENUS 32 FF NG (IT) --> Nota 7	32	0	61	45	2		1	0					D - 660060093200
3300118	GENUS 35 FF NG (EAA 01) --> Nota 7	32	0	61	45	2		1	0					D - 660060093200
3300119	GENUS 24 FF LPG (IT) --> Nota 7	54	0	90	71	2		1	0					D - 660060093200
3300120	GENUS 24 CF LPG (IT) --> Nota 7	0	0	84	64	2		1	0					C - 660060054400
3300121	GENUS 28 FF LPG (IT) --> Nota 7	47	0	85	66	2		1	0					D - 660060093200
3300122	GENUS 28 CF LPG (IT) --> Nota 7	0	0	84	66	2		1	0					C - 660060054400
3300123	GENUS 32 FF LPG (IT) --> Nota 7	52	0	83	64	2	1	0					D - 660060093200	
3300124	CLAS 24 FF LPG (PI)	63	0	87	66	2	0	0					B - 660060054200	
3300125	CLAS 24 CF LPG (PI)	0	0	84	64	2	0	0					C - 660060054400	
3300126	CLAS 28 FF LPG (PI)	58	0	85	66	2	0	0					B - 660060054200	
3300127	GENUS 24 FF NG (EAA 02) --> Nota 7	36	0	69	52	2	--> Nota 5	1	0				D - 660060093200	
3300128	GENUS 24 CF NG (EAA 02) --> Nota 7	0	0	63	47	2		1	0					C - 660060054400
3300129	GENUS 28 FF NG (EAA 02) --> Nota 7	36	0	64	49	2		1	0					D - 660060093200
3300130	GENUS 28 CF NG (EAA 02) --> Nota 7	0	0	61	54	2		1	0					C - 660060054400
3300131	GENUS 35 FF NG (EAA 02) --> Nota 7	32	0	61	45	2		1	0					D - 660060093200
3300134	GENUS 24 FF NG (CI)	36	0	69	52	2		0	0					D - 660060093200
3300135	GENUS 24 FF 5R (CI)	0	0	48	36	2		0	0					D - 660060093200
3300136	GENUS 28 FF NG (CI)	36	0	64	49	2		0	0					D - 660060093200
3300137	GENUS 28 FF 5R (CI)	0	0	44	34	2		0	0					D - 660060093200
3300138	GENUS 35 FF NG (CI)	32	0	61	45	2		0	0					D - 660060093200
3300139	GENUS 35 FF 5R (CI)	0	0	46	37	2		0	0					D - 660060093200
3300140	CLAS 18 FF NG (CI)	45	0	52	29	2		0	0					B - 660060054200
3300141	CLAS 18 FF 5R (CI)	0	0	40	30	2		0	0					B - 660060054200
3300142	CLAS 24 FF NG (CI)	47	0	69	52	2		0	0					B - 660060054200
3300143	CLAS 24 FF 5R (CI)	0	0	48	36	2		0	0					B - 660060054200
3300144	CLAS 28 FF NG (CI)	47	0	64	49	2		0	0					B - 660060054200
3300145	CLAS 28 FF 5R (CI)	0	0	44	34	2		0	0					B - 660060054200
3300146	CLAS 15 FF SYS. NG (CI)	99	2	50	39	2	0	0					B - 660060054200	
3300147	CLAS 15 FF SYS. 5R (CI)	0	2	41	31	2	0	0					B - 660060054200	
3300148	CLAS 24 FF SYS. NG (CI)	47	2	69	52	2	0	0					B - 660060054200	
3300149	CLAS 24 FF SYS. 5R (CI)	0	2	48	36	2	0	0					B - 660060054200	
3300150	CLAS 28 FF SYS. NG (CI)	47	2	64	49	2	0	0					B - 660060054200	
3300151	CLAS 28 FF SYS. 5R (CI)	0	2	44	34	2	0	0					B - 660060054200	
3300152	CLAS 32 FF SYS. NG (CI)	43	2	61	45	2	0	0					B - 660060054200	
3300153	CLAS 32FF SYSTEM 5R (CI)	0	2	46	37	2	0	0					B - 660060054200	
3300168	CLAS 32 FF NG (FR BE)	49	0	72	53	2	0	0					B - 660060054200	
3300169	CLAS 32 FF LPG (FR)	63	0	83	64	2	0	0					B - 660060054200	
3300170	CLAS 28 FF NG (FR BE)	50	0	71	54	2	0	0					B - 660060054200	
3300171	CLAS 28 FF LPG (FR BE)	58	0	85	66	2	0	0					B - 660060054200	
3300173	CLAS 24 VMC NG	0	0	72	53	2	0	0					C - 660060054400	
3300174	CLAS 24 FF NG (IE)	47	0	69	52	2	0	0					B - 660060054200	

		Parameters / Paramètres / Parametri / Ajustes										EEprom	
		220	228	230	231	238	247	248	250	253	302		870
3300175	CLAS 30 FF NG (IE)	47	0	64	49	2	--> Nota 5	0	0			B - 660060054200	
3300176	CLAS 21 FF SYSTEM NG (IE)	45	2	55	45	2		0	0			B - 660060054200	
3300177	CLAS 28 FF SYSTEM NG (IE)	47	2	64	49	2		0	0			B - 660060054200	
3300178	CLAS 32 FF SYSTEM NG (IE)	43	2	61	45	2		0	0			B - 660060054200	
3300179	EGIS 24 FF NG (PI) --> Nota 3 & 8	*			*								A - 660060021000
3300180	EGIS 24 FF LPG (PI) --> Nota 3 & 8	*			*								A - 660060021000
3300181	EGIS 24 CF NG (PI) --> Nota 3 & 8	*			*								E - 660060093300
3300182	EGIS 24 CF LPG (PI) --> Nota 3 & 8	*			*								E - 660060093300
3300183	AS 24 FF NG (IT RO PI) --> Nota 3 & 8	*			*								A - 660060021000
3300184	AS 24 FF LPG (IT RO PI) --> Nota 3 & 8	*			*								A - 660060021000
3300185	AS 24 CF NG (IT RO PI) --> Nota 3 & 8	*			*							E - 660060093300	
3300186	AS 24 CF LPG (IT RO PI) --> Nota 3 & 8	*			*							E - 660060093300	
3300187	CLAS 24 FF NG (EAA1)	47	0	69	52	2	--> Nota 5	0	0			B - 660060054200	
3300188	CLAS 28 FF NG (EAA1)	47	0	64	49	2		0	0			B - 660060054200	
3300189	CLAS 24 CF NG (EAA1)	0	0	63	47	2		0	0			C - 660060054400	
3300190	CLAS 24 FF NG (EAA2)	47	0	69	52	2		0	0			B - 660060054200	
3300191	CLAS 28 FF NG (EAA2)	47	0	64	49	2		0	0			B - 660060054200	
3300192	CLAS 24 CF NG (EAA2)	0	0	63	47	2		0	0			C - 660060054400	
3300193	EGIS 24 FF NG (EAA1) --> Nota 3 & 8	*			*								A - 660060021000
3300194	EGIS 24 CF NG (EAA1) --> Nota 3 & 8	*			*								E - 660060093300
3300195	EGIS 24 FF NG (EAA2) --> Nota 3 & 8	*			*								A - 660060021000
3300196	EGIS 24 CF NG (EAA2) --> Nota 3 & 8	*			*								E - 660060093300
3300197	CLAS 24 FF SYSTEM NG (IT)	47	2	69	52	2	--> Nota 5	0	0			B - 660060054200	
3300199	CLAS 24 CF SYSTEM NG (IT)	0	2	63	47	2		0	0				C - 660060054400
3300201	CLAS 28 FF SYSTEM NG (PI)	47	2	64	49	2		0	0				B - 660060054200
3300203	CLAS 28 CF SYSTEM NG (PI)	0	2	61	45	2		0	0				C - 660060054400
3300205	CLAS 32FF SYSTEM NG (PI)	43	2	61	45	2		0	0				B - 660060054200
3300207	CLAS SYSTEM 24 FF NG (EAA1)	47	2	69	52	2		0	0				B - 660060054200
3300208	CLAS SYSTEM 24 CF NG (EAA1)	0	2	63	47	2		0	0				C - 660060054400
3300209	CLAS SYSTEM 28 CF NG (EAA1)	0	2	61	45	2		0	0				C - 660060054400
3300210	CLAS SYSTEM 28 FF NG (EAA1)	47	2	64	49	2		0	0				B - 660060054200
3300212	CLAS 24 FF SYSTEM NG (EAA2)	47	2	69	52	2		0	0				B - 660060054200
3300213	CLAS 24 CF SYSTEM NG (EAA2)	0	2	63	47	2	0	0				C - 660060054400	
3300214	CLAS 28 FF SYSTEM NG (EAA2)	47	2	64	49	2	0	0				B - 660060054200	
3300215	CLAS 28 CF SYSTEM NG (EAA2)	0	2	61	45	2	0	0				C - 660060054400	
3300216	CLAS 24 FF NG (FR BE)	56	0	78	60	2	--> Nota 5	0	0			B - 660060054200	
3300216	CLAS 24 FF NG (FR BE) (Pressostat)	56	0	78	60	2		0	0				B - 660060054200
3300217	CLAS 24 CF LPG (FR)	0	0	84	64	2		0	0				C - 660060054400
3300218	CLAS 24 CF NG (FR BE)	0	0	72	53	2		0	0				C - 660060054400
3300219	CLAS 24 FF LPG (FR)	65	0	90	71	2		0	0				B - 660060054200
3300224	CLAS SYSTEM 32 FF NG (EAA1)	43	2	61	45	2		0	0				B - 660060054200
3300225	CLAS SYSTEM 15 FF NG (EAA1)	99	2	50	39	2		0	0				B - 660060054200
3300226	CLAS SYSTEM 15 CF NG (EAA1)	0	2	48	36	2		0	0				C - 660060054400
3300231	CLAS 24 FF SYSTEM NG FR	56	2	78	60	2		0	0				B - 660060054200
3300232	CLAS 24 CF SYSTEM NG FR	0	2	72	53	2		0	0				C - 660060054400
3300233	GENUS 24 FF NG PI --> Nota 7	36	0	69	52	2	--> Nota 5	1	0			D - 660060093200	
3300234	GENUS 24 CF NG PI --> Nota 7	0	0	63	47	2		1	0				C - 660060054400
3300235	GENUS 28 FF NG PI --> Nota 7	36	0	64	49	2		1	0				D - 660060093200
3300236	GENUS 28 CF NG PI --> Nota 7	0	0	61	45	2		1	0				C - 660060054400
3300237	GENUS 35 FF NG PI --> Nota 7	32	0	61	45	2		1	0				D - 660060093200
3300238	GENUS 24 FF LPG PI --> Nota 7	54	0	90	72	2		1	0				D - 660060093200
3300239	GENUS 24 CF LPG PI --> Nota 7	0	0	84	64	2		1	0				C - 660060054400

		Parameters / Paramètres / Parametri / Ajustes										EEprom					
		220	228	230	231	238	247	248	250	253	302		870				
3300240	GENUS 28 FF LPG PI	--> Nota 7	47	0	85	66	2										D - 660060093200
3300241	GENUS 28 CF LPG PI	--> Nota 7	0	0	61	45	2										C - 660060054400
3300242	GENUS 35 FF LPG PI	--> Nota 7	32	0	61	45	2										D - 660060093200
3300243	CLAS 24 FF NG (IT)		47	0	69	52	2										B - 660060054200
3300244	CLAS 24 CF NG (IT)		0	0	63	47	2										C - 660060054400
3300245	CLAS 28 FF NG (IT)		47	0	64	49	2										B - 660060054200
3300246	CLAS 24 FF LPG (IT)		63	0	87	66	2										B - 660060054200
3300247	CLAS 24 CF LPG (IT)		0	0	84	64	2										C - 660060054400
3300248	CLAS 28 FF LPG (IT)		58	0	85	66	2										B - 660060054200
3300249	CLAS 28 FF SYSTEM NG (ITI)		47	2	64	49	2										B - 660060054200
3300250	CLAS 28 CF SYSTEM NG (IT)		0	2	61	45	2										C - 660060054400
3300251	CLAS 32 FF SYSTEM NG (IT)		43	2	61	45	2										B - 660060054200
3300252	EGIS 24 FF NG (IT)	--> Nota 3 & 8	*			*											A - 660060021000
3300253	EGIS 24 FF LPG (IT)	--> Nota 3 & 8	*			*											A - 660060021000
3300254	EGIS 24 CF NG (IT)	--> Nota 3 & 8	*			*											E - 660060093300
3300255	EGIS 24 CF LPG (IT)	--> Nota 3 & 8	*			*											E - 660060093300
3300256	GENUS 35.0 FF NG (CI)		32	0	61	45	2										D - 660060093200
3300257	GENUS 35.0 FF 5R (CI)		0	0	46	37	2										D - 660060093200
3300258	GENUS 36 FF NG (EAA2)	--> Nota 7	34	0	61	45	2										D - 660060093200
3300259	EGIS 24 CF (BE)	--> Nota 3 & 8	*			*											E - 660060093300
3300260	EGIS 24 (BE)	--> Nota 3 & 8	*			*											A - 660060021000
3300285	BS 24 FF	--> Nota 3 & 8	*			*											B - 660060054200
3300286	BS 24 CF	--> Nota 3 & 8	*			*											C - 660060054400
3300294	BS 24 FF LPG	--> Nota 3 & 8	*			*											B - 660060054200
3300297	GENUS 24 FF NG	--> Nota 7	36	0	69	52	2										D - 660060093200
3300298	GENUS 24 CF NG	--> Nota 7	0	0	63	47	2										C - 660060054400
3300299	GENUS 28 FF NG	--> Nota 7	36	0	64	49	2										D - 660060093200
3300300	GENUS 28 CF NG	--> Nota 7	0	0	61	45	2										C - 660060054400
3300301	GENUS 32 FF NG	--> Nota 7	32	0	61	45	2										D - 660060093200
3300302	GENUS 24 FF LPG	--> Nota 7	54	0	90	71	2										D - 660060093200
3300303	GENUS 24 CF LPG	--> Nota 7	0	0	84	64	2										C - 660060054400
3300304	GENUS 28 FF LPG	--> Nota 7	47	0	85	66	2										D - 660060093200
3300305	GENUS 28 CF LPG	--> Nota 7	0	0	84	66	2										C - 660060054400
3300306	GENUS 32 FF LPG	--> Nota 7	52	0	83	64	2										D - 660060093200
3300307	CLAS 24 FF NG		47	0	69	52	2										B - 660060054200
3300308	CLAS 24 CF NG		0	0	63	47	2										C - 660060054400
3300309	CLAS 28 FF NG		47	0	64	49	2										B - 660060054200
3300310	CLAS 24 FF LPG		63	0	87	66	2										B - 660060054200
3300311	CLAS 24 CF LPG		0	0	84	64	2										C - 660060054400
3300313	CLAS 28 FF LPG		58	0	85	66	2										B - 660060054200
3300315	CLAS 24 FF SYSTEM NG		47	2	69	52	2										B - 660060054200
3300316	CLAS 24 CF SYSTEM NG		0	2	63	47	2										C - 660060054400
3300317	CLAS 28 FF SYSTEM NG		47	2	64	49	2										B - 660060054200
3300318	CLAS 28 CF SYSTEM NG		0	2	61	45	2										C - 660060054400
3300319	CLAS 32 FF SYSTEM NG		41	2	61	45	2										B - 660060054200
3300320	EGIS 24 FF NG	--> Nota 3 & 8	*			*											A - 660060021000
3300321	EGIS 24 FF LPG	--> Nota 3 & 8	*			*											A - 660060021000
3300322	EGIS 24 CF NG	--> Nota 3 & 8	*			*											E - 660060093300
3300323	EGIS 24 CF LPG	--> Nota 3 & 8	*			*											E - 660060093300
3300334	GENUS 36 FF NG	--> Nota 7	34	0	61	45	2										D - 660060093200
3300335	AS 24 FF NG	--> Nota 3 & 8	*			*											A - 660060021000
3300336	AS 24 FF LPG	--> Nota 3 & 8	*			*											A - 660060021000

		Parameters / Paramètres / Parametri / Ajustes										EEprom				
		220	228	230	231	238	247	248	250	253	302		870			
3300337	AS 24 CF NG															E - 660060093300
	--> Nota 3 & 8	*			*											E - 660060093300
3300338	AS 24 CF LPG															A - 660060021000
	--> Nota 3 & 8	*			*											B - 660060054200
3300348	AS-BIK 24 FF NG															B - 660060054200
	--> Nota 3 & 8	*			*											B - 660060054200
3300375	CLAS 24 FF SYSTEM NG 3WV (CI)	47	2	69	52	2										D - 660060093200
3300376	CLAS 28 FF SYSTEM NG 3WV (CI)	47	2	64	49	2										D - 660060093200
3300377	CLAS 32 FF SYSTEM NG 3WV (CI)	43	2	61	45	2										D - 660060093200
3300588	CLAS B 28 FF (CI)	37	5	64	49	2										D - 660060093200
3310027	URBIA 25 FF NG	36	3	69	52	2										D - 660060093200
3310028	URBIA 25 CF NG	0	3	84	74	2										C - 660060054400
3310029	URBIA 30 FF NG	36	3	64	49	2										D - 660060093200
3310030	URBIA 30 CF NG	0	3	61	45	2										C - 660060054400
3310031	URBIA 35 FF NG	34	3	61	45	2										D - 660060093200
3310032	URBIA 25 FF LPG	54	3	90	71	2										D - 660060093200
3310033	URBIA 25 CF LPG	0	3	84	74	2										C - 660060054400
3310039	TALIA 25 FF NG	36	0	69	52	2										D - 660060093200
3310040	TALIA 25 CF NG	0	0	63	47	2										C - 660060054400
3310041	TALIA 30 FF NG	37	0	64	49	2										D - 660060093200
3310042	TALIA 30 CF NG	0	0	61	45	2										C - 660060054400
3310043	TALIA 25 FF LPG	54	0	61	45	2										D - 660060093200
3310044	TALIA 30 CF LPG	0	0	84	66	2										C - 660060054400
3310045	TALIA SYSTEM 25 FF NG	36	1	69	52	2										D - 660060093200
3310046	TALIA SYSTEM 30 FF NG	47	1	85	66	2										D - 660060093200
3310047	TALIA SYSTEM 25 CF NG	0	1	62	49	2										C - 660060054400
3310051	PIGMA 25 FF NG	47	0	69	52											B - 660060054200
3310052	PIGMA 30 FF NG	47	0	64	49											B - 660060054200
3310053	PIGMA 25 CF NG	0	0	62	49											C - 660060054400
3310054	PIGMA 25 CF LPG	0	0	84	74											C - 660060054400
3310056	PIGMA 25 FF LPG	65	0	90	71											B - 660060054200
3310058	PIGMA 30 FF LPG	58	0	85	66											B - 660060054200
3310059	ALIXIA 24 FF NG															B - 660060054200
	--> Nota 3 & 8	*			*											C - 660060054400
3310060	ALIXIA 24 CF NG															C - 660060054400
	--> Nota 3 & 8	*			*											B - 660060054200
3310061	ALIXIA 24 FF LPG															C - 660060054400
	--> Nota 3 & 8	*			*											D - 660060093200
3310062	ALIXIA 24 CF LPG															D - 660060093200
	--> Nota 3 & 8	*			*											C - 660060054400
3310065	TALIA 35 FF NG	34	0	61	45	2										D - 660060093200
3310069	TALIA SYSTEM 35 FF NG	34	1	61	45	2										D - 660060093200
3310070	TALIA SYSTEM 15 FF NG	41	1	51	38	2										D - 660060093200
3310071	TALIA SYSTEM 15 CF NG	0	1	48	36	2										C - 660060054400
3310074	NIAGARA C 25 FF	36	5	69	52	2										D - 660060093200
3310075	NIAGARA C 30 FF	37	5	64	49	2										D - 660060093200
3310076	NIAGARA C 25 CF	0	5	63	47	2										C - 660060054400
3310081	URBIA 25 FF N FR (Usability)	45	3	78	60	2										D - 660060093200
3310082	URBIA 24 VMC N FR (Usability)	0	3	72	53	2										C - 660060054400
3310085	MIRA C 25 FF N FR	45	0	78	60	2										B - 660060054200
3310087	NIAGARA C 25 FF FR (Usability)	45	5	78	60	2										D - 660060093200
3310088	MIRA C 24 VMC N FR (Usability)	0	0	72	53	2										C - 660060054400
3310089	URBIA 25 CF N FR (Usability)	0	3	72	53	2										C - 660060054400
3310090	MIRA C 25 CF N FR (Usability)	0	0	72	53	2										C - 660060054400
3310091	NIAGARA C 25 CF FR BE	0	5	72	53	2										C - 660060054400
3310093	NIAGARA C 24 VMC FR (Usability)	0	5	72	53	2										C - 660060054400
3310094	SERELIA 24 VMC N FR (Usability)	0	3	72	53	2										C - 660060054400
3310095	SERELIA 25 FF N FR (Usability)	45	3	78	60	2										D - 660060093200
3310096	SERELIA 25 CF N FR (Usability)	0	3	72	53	2										C - 660060054400

		Parameters / Paramètres / Parametri / Ajustes										EEprom
		220	228	230	231	238	247	248	250	253	302	
3310097	TALIA SYSTEM 25 FF N FR	45	1	78	60	2		0	1		0	D - 660060093200
3310100	TALIA SYSTEM 24 VMC N FR	0	1	72	53	2		0	1		0	C - 660060054400
3310101	TALIA SYSTEM 25 CF N FR	0	1	72	53	2		0	1			C - 660060054400
3310103	NIAGARA C 30 FF FR BE (Usability)	39	5	71	54	2		0	0	35	0	D - 660060093200
3310105	MIRA C 30 FF N FR (Usability)	39	0	71	54	2		0	1		0	B - 660060054200
3310106	URBIA 30 FF N FR (Usability)	39	0	71	54	2		0	1	35	0	D - 660060093200
3310109	URBIA 30 CF N FR (Usability)	0	3	67	55	2		0	1		0	C - 660060054400
3310169	ALIXIA SIMPLE 18 CF --> Nota 3 & 8	*			*							C - 660060054400
3310170	ALIXIA SIMPLE 18 FF --> Nota 3 & 8	*			*							B - 660060054200
3310115	SERELIA 30 CF N FR (Usability)	0	3	67	55	2		0	1	35	0	C - 660060054400
3310116	TALIA SYSTEM 30 FF N FR-BE	39	1	71	54	2		0	1		0	D - 660060093200
3310117	SERELIA 30 FF N FR (Usability)	39	0	71	54	2		0	1	35	0	D - 660060093200
3310118	URBIA 35 FF N FR	43	3	71	54	2		0	1	35		D - 660060093200
3310258	ALIXIA 18 FF NG --> Nota 3 & 8	*			*							B - 660060054200
3310304	ALIXIA SIMPLE 24 CF --> Nota 3 & 8	*			*							C - 660060054400
3310305	ALIXIA SIMPLE 24 FF --> Nota 3 & 8	*			*							B - 660060054200
3314011	ECOSI 24 CA CPR MET --> Nota 6	0	0	63	47	2		0	0	0		C - 660060054400
3314012	ECOSI 25 CS CPR MET --> Nota 6	47	0	69	52	2		0	0	0		B - 660060054200
3314013	ECOSI 30 CS CPR MET --> Nota 6	47	0	64	49	2		0	0	0		B - 660060054200
3314014	ECOSI 25 CS SP/A MET --> Nota 6	47	2	69	52	2		0	2	0		B - 660060054200
3314019	ECOSI 25 CS CPA MET --> Nota 6	36	5	69	52	2		0	2	0		D - 660060093200
3314020	ECOSI 30 CS CPA MET --> Nota 6	37	5	64	49	2		0	2	0		D - 660060093200
3314024	ECOSI 24 CA CPR GPL --> Nota 6	0	0	84	64	2		0	0	0		C - 660060054400
3314025	ECOSI 25 CS CPR GPL --> Nota 6	63	0	87	66	2		0	0	0		B - 660060054200
3314026	ECOSI 30 CS CPR GPL --> Nota 6	58	0	85	66	2		0	0	0		B - 660060054200
3314027	FA-24 N --> Nota 3 & 8	*			*							E - 660060093300
3314028	FA-24 B --> Nota 3 & 8	*			*							A - 660060021000
3650149	SERELIA 25 CF N FR	0	3	72	53	2		0	1	35		C - 660060054400
3650150	SERELIA 25 CF B/P FR	0	3	87	66	2		0	1	35		C - 660060054400
3650151	SERELIA 24 VMC N FR	0	3	72	53	2		0	1	35		C - 660060054400
3650152	SERELIA 25 FF N FR	45	3	78	60	2		0	1	35		D - 660060093200
3650153	SERELIA 25 FF B/P FR	54	3	90	71	2		0	1	35		D - 660060093200
3650154	SERELIA 30 CF N FR	0	3	67	55	2		0	1	35		C - 660060054400
3650156	SERELIA 30 FF N IT	39	3	71	54	2		0	1	35		D - 660060093200
3650157	SERELIA 35 FF N FR	43	3	71	54	2		0	1	35		D - 660060093200
3650158	URBIA 25 CF N FR	0	3	72	53	2		0	1	35		C - 660060054400
3650159	URBIA 25 CF B/P FR	0	3	84	64	2		0	1	35		C - 660060054400
3650160	URBIA 24 VMC N FR	0	3	72	53	2		0	1	35		C - 660060054400
3650161	URBIA 25 FF N FR	45	3	78	60	2		0	1	35		D - 660060093200
3650162	URBIA 25 FF B/P FR	54	3	90	71	2		0	1	35		D - 660060093200
3650163	URBIA 30 CF N FR	0	3	67	55	2		0	1	35		C - 660060054400
3650165	URBIA 30 FF N FR	39	3	71	54	2		0	1	35		D - 660060093200
3650167	URBIA 35 FF N FR	43	3	71	54	2		0	1	35		D - 660060093200
3650168	URBIA 25 CF N IT-PI	0	3	63	47	2		0	1	35		C - 660060054400
3650169	URBIA 25 CF B/P IT-PI	0	3	84	74	2		0	1	35		C - 660060054400
3650170	URBIA 25 FF N IT-PI	36	3	69	52	2		0	1	35		D - 660060093200
3650171	URBIA 25 FF B/P IT-PI	54	3	90	71	2		0	1	35		D - 660060093200
3650172	URBIA 30 CF N IT-PI	0	3	61	45	2		0	1	35		C - 660060054400
3650174	URBIA 30 FF N IT-PI	36	3	64	49	2		0	1	35		D - 660060093200
3650176	URBIA 35 FF N IT-PI	34	3	61	45	2		0	1	35		D - 660060093200
3650177	TALIA 25 CF N BE	0	0	72	53	2		0	1			C - 660060054400
3650178	TALIA 25 N BE	41	0	71	54	2		0	1			B - 660060054200

		Parameters / Paramètres / Parametri / Ajustes										EEprom		
		220	228	230	231	238	247	248	250	253	302		870	
3650179	TALIA 30 CF N BE	0	0	67	55	2		0	1					C - 660060054400
3650180	TALIA 30 N BE	39	0	71	54	2		0	1					B - 660060054200
3650181	TALIA 25 CF N IT-PI	0	0	63	47	2		0	1					C - 660060054400
3650182	TALIA 25 CF B/P IT-PI	0	0	84	74	2		0	1					C - 660060054400
3650183	TALIA 25 FF N IT-PI	36	0	69	52	2		0	1					D - 660060093200
3650184	TALIA 25 FF B/P IT-PI	54	0	90	71	2		0	1					D - 660060093200
3650185	TALIA 30 CF N IT-PI	0	0	61	45	2		0	1					C - 660060054400
3650186	TALIA 30 CF B/P IT	0	0	84	66	2		0	1					C - 660060054400
3650187	TALIA 30 FF N IT-PI	37	0	64	49	2		0	1					D - 660060093200
3650188	TALIA 30 FF B/P IT	47	0	85	66	2		0	1					D - 660060093200
3650189	TALIA 25 CF N EAA	0	0	63	47	2		0	1					C - 660060054400
3650190	TALIA 25 FF N EAA	36	0	69	52	2		0	1					D - 660060093200
3650191	TALIA 30 FF N EAA	36	0	64	49	2		0	1					D - 660060093200
3650192	TALIA 35 FF N EAA	34	0	64	45	2		0	1					D - 660060093200
3650193	INOA 25 CF N FR-BE	0	0	71	54			0	1					C - 660060054400
3650194	INOA 25 CF B/P FR	0	0	84	64			0	1					C - 660060054400
3650195	INOA 24 VMC N FR	0	0	71	54			0	1					C - 660060054400
3650196	INOA 25 FF N FR-BE	56	0	78	60			0	1					B - 660060054200
3650197	INOA 25 FF B/P FR	65	0	90	71			0	1					B - 660060054200
3650198	INOA 30 CF N FR	0	0	67	56			0	1					C - 660060054400
3650200	INOA 30 FF N FR-BE	54	0	75	56			0	1					B - 660060054200
3650206	INOA 25 FF N IT-PI	47	0	69	52			0	1					B - 660060054200
3650207	INOA 25 FF B/P IT-PI	65	0	90	71			0	1					B - 660060054200
3650208	INOA 30 CF N PI	0	0	61	45			0	1					C - 660060054400
3650209	INOA 30 CF B/P PI	0	0	84	66			0	1					C - 660060054400
3650210	INOA 30 FF N IT-PI	47	0	64	49			0	1					B - 660060054200
3650211	INOA 30 FF B/P IT-PI	58	0	85	66			0	1					B - 660060054200
3650212	PIGMA 25 CF N FR	0	0	71	54			0	1					C - 660060054400
3650213	PIGMA 25 CF B/P FR	0	0	84	74			0	1					C - 660060054400
3650214	PIGMA 24 VMC N FR	0	0	71	54			0	1					C - 660060054400
3650215	PIGMA 25 FF N FR	56	0	78	60			0	1					B - 660060054200
3650216	PIGMA 25 FF B/P FR	65	0	90	71			0	1					B - 660060054200
3650217	PIGMA 30 FF N FR	50	0	71	54			0	1					B - 660060054200
3650224	PIGMA 25 CF N EAA	0	0	62	49			0	1					C - 660060054400
3650225	PIGMA 25 FF N EAA	47	0	69	52			0	1					B - 660060054200
3650226	PIGMA 30 FF N EAA	47	0	64	49			0	1					B - 660060054200
3650227	ALIXIA 24 CF N IT-PI			*		*								C - 660060054400
3650228	ALIXIA 24 CF B/P IT-PI			*		*								C - 660060054400
3650229	ALIXIA 24 FF N IT-PI			*		*								B - 660060054200
3650230	ALIXIA 24 FF B/P IT-PI			*		*								B - 660060054200
3650231	TALIA SYS. 25 CF N IT-PI	0	1	62	49	2		0	1					C - 660060054400
3650232	TALIA SYS. 25 FF N IT-PI	36	1	69	52	2		0	1					D - 660060093200
3650233	TALIA SYS. 30 FF N IT-PI	36	1	64	49	2		0	1					D - 660060093200
3650234	TALIA SYS. 18 CF N FR	0	1	72	57	2		0	1					C - 660060054400
3650235	TALIA SYS. 18 VMC N FR	0	1	72	57	2		0	1					C - 660060054400
3650236	TALIA SYS. 25 CF N FR	0	1	72	53	2		0	1					C - 660060054400
3650237	TALIA SYS. 24 VMC N FR	0	1	72	53	2		0	1					C - 660060054400
3650238	TALIA SYS. 25 FF N FR	45	1	78	60	2		0	1					D - 660060093200
3650239	TALIA SYS. 30 FF N FR-BE	39	1	71	54	2		0	1					D - 660060093200
3650239	TALIA SYS. 30 FF N FR-BE	39	1	71	54	2		0	1					D - 660060093200
3650240	TALIA SYS. 25 CF N EAA	0	1	62	49	2		0	1					C - 660060054400
3650241	TALIA SYS. 25 FF N EAA	36	1	69	52	2		0	1					D - 660060093200

		Parameters / Paramètres / Parametri / Ajustes										EEprom	
		220	228	230	231	238	247	248	250	253	302		870
3650242	TALIA SYS. 30 FF N EAA	36	1	64	49	2		0	1				D - 660060093200
3650243	TALIA SYS. 35 FF N EAA	34	1	61	45	2		0	1				D - 660060093200
3650252	TALIA SYS. 15 FF N EAA	41	1	51	38	2		0	1				D - 660060093200
3650252	TALIA SYS. 15 FF N EAA	41	1	51	38	2		0	1				D - 660060093200
3650258	INOA 25 CF GPO FR	0	0	42	34	0		0	1				C - 660060054400
3650259	INOA 25 FF GPO FR	33	0	43	33	0		0	1				B - 660060054200
3650260	INOA 24 VMC GPO FR	0	0	42	34	0		0	1				C - 660060054400
3650262	TALIA SYSTEM 15 CF N EAA	0	1	48	36	2		0	1				C - 660060054400
3650263	PIGMA 25 CF N IT-PI	0	0	62	49			0	1				C - 660060054400
3650264	PIGMA 25 CF B/P IT-PI	0	0	84	74			0	1				C - 660060054400
3650265	PIGMA 25 FF N IT-PI	47	0	69	52			0	1				B - 660060054200
3650266	PIGMA 25 FF B/P IT-PI	65	0	90	71			0	1				B - 660060054200
3650267	PIGMA 30 FF N IT-PI	47	0	64	49			0	1				B - 660060054200
3650268	TALIA 30 CF N EAA	0	0	61	45	2		0	1				C - 660060054400
3650276	TALIA SYSTEM 15 CF N FR	0	1	71	54	2		0	1				C - 660060054400
3650277	TALIA SYSTEM 15 VMC N FR	0	1	71	54	2		0	1				C - 660060054400
3650286	ALIXIA 24 FF NG EAA --> Nota 3 & 8	*			*								B - 660060054200
3650290	MIRA C 25 CF N FR	0	0	72	53	2		0	1				C - 660060054400
3650291	MIRA C 25 CF B/P FR	0	0	84	74	2		0	1				C - 660060054400
3650292	MIRA C 24 VMC N FR	0	0	72	53	2		0	1				C - 660060054400
3650293	MIRA C 25 FF N FR	45	0	78	60	2		0	1				B - 660060054200
3650294	MIRA C 25 FF B/P FR	54	0	90	71	2		0	1				B - 660060054200
3650295	MIRA C 30 FF N FR	39	0	71	54	2		0	1				B - 660060054200
3650300	ALIXIA 20 FF N TU --> Nota 3 & 8	*			*								B - 660060054200
3650301	ALIXIA 20 CF N TU --> Nota 3 & 8	*			*								C - 660060054400
3650305	TALIA 25 CF N EAA2	0	0	63	47	2		0	1				C - 660060054400
3650306	TALIA 25 FF NG EAA2	36	0	69	52	2		0	1				D - 660060093200
3650307	TALIA 30 FF N EAA2	37	0	64	49	2		0	1				D - 660060093200
3650308	TALIA 35 FF N EAA2	34	0	61	45	2		0	1				D - 660060093200
3650309	PIGMA 25 CF N EAA2	0	0	62	49			0	1				C - 660060054400
3650310	PIGMA 25 FF N EAA2	47	0	69	52			0	1				B - 660060054200
3650311	PIGMA 30 FF N EAA2	47	0	64	49			0	1				B - 660060054200
3650312	INOA S 25 CF N FR	0	0	78	60	0		0	1				C - 660060054400
3650314	TALIA SYS. 15 CF N EAA2	0	1	48	36	2		0	1				C - 660060054400
3650315	TALIA SYS. 15 FF N EAA2	41	1	51	38	2		0	1				D - 660060093200
3650316	TALIA SYS. 35 FF N EAA2	34	1	61	45	2		0	1				D - 660060093200
3650319	NIAGARA C 25 CF BE	0	5	72	53	2		0	0	35			C - 660060054400
3650320	NIAGARA C 30 FF FR-BE	39	5	71	54	2		0	0	35			D - 660060093200
3650323	NIAGARA C 30 FF HMO	37	5	64	49	2		0	0	35			D - 660060093200
3650324	NIAGARA C 25 FF HMO	36	5	69	52	2		0	0	35			D - 660060093200
3650325	NIAGARA C 25 CF HMO	0	5	63	47	2		0	0	35			C - 660060054400
3650328	NIAGARA C 30 FF EE	37	5	64	49	2		0	0	35			D - 660060093200
3650329	NIAGARA C 25 FF EE	36	5	69	52	2		0	0	35			D - 660060093200
3650330	NIAGARA C 25 CF EE	0	5	63	47	2		0	0	35			C - 660060054400
3650331	NIAGARA C 25 FF FR	45	5	78	60	2		0	0	35			D - 660060093200
3650332	NIAGARA C 24 VMC FR	0	5	72	53	2		0	0	35			C - 660060054400
3650337	ALIXIA 24 FF N EE --> Nota 3 & 8	*			*								B - 660060054200
3650338	ALIXIA 24 CF N EE --> Nota 3 & 8	*			*								C - 660060054400
3650342	PIGMA 30 FF B/P IT-PI	58	0	85	66			0	1				B - 660060054200
3650346	ALIXIA 24 FF NG (GR) --> Nota 3 & 8	*			*								B - 660060054200
3650347	URBIA H 25 CF N FR	0	3	72	53	2		0	2	1			C - 660060054400
3650348	URBIA H 24 VMC N FR	0	3	72	53	2		0	2	1			C - 660060054400









